

CABINETS & COUNTERTOPS

BY CUSTOM RETAIL

Supplier of
Cabinets &
Countertops

Ask about
our new
Marblestone™
Line

ORDER GUIDE

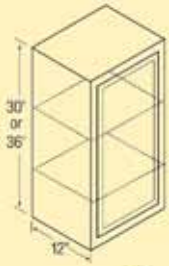


Granite Countertops on Request

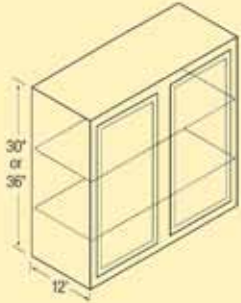
318-861-0108
www.rsfixtures.com

WALL Cabinets

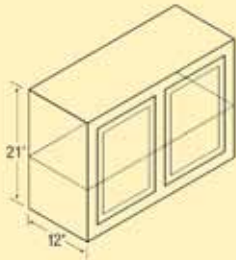
30" High



9W	27W
12W	30W
15W	33W
18W	36W
21W	42W
24W	48W

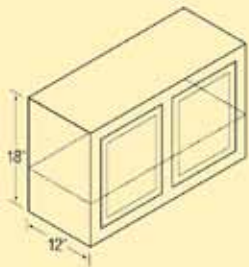


21" High



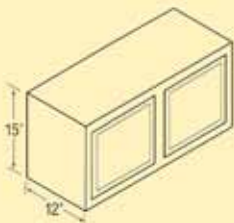
24R
30R
36R
42R

18" High



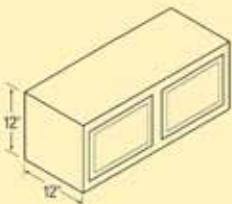
24Y
36Y
30Y

15" High



30X
33X
36X
39X

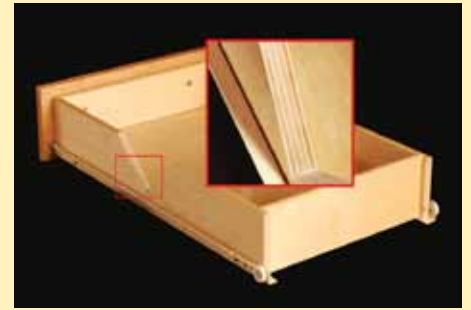
12" High



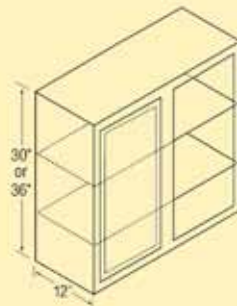
24WC
36WC
39WC
42WC
48WC

OAK

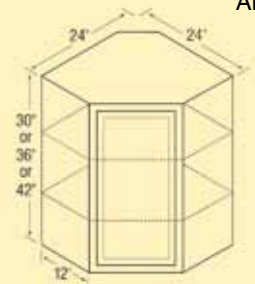
Our oak series features flat panel doors and plywood drawers. This series can be designed and accessorized



WALL CORNER Cabinets



24WC	42WC
36WC	48WC
39WC	

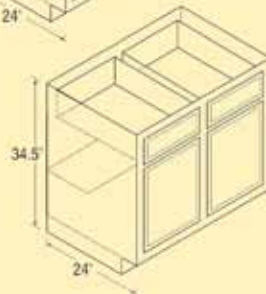


Angle Wall
24A

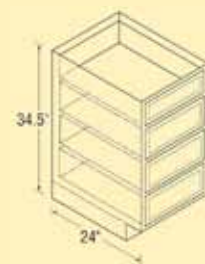
BASE Cabinets



12B	21B	36B
15B	24B	42B
18B	30B	48B

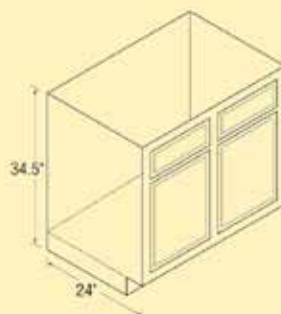


DRAWER Cabinets



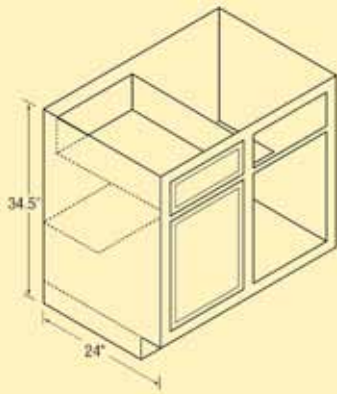
15D
18D
24D

RANGE & SINK Cabinets

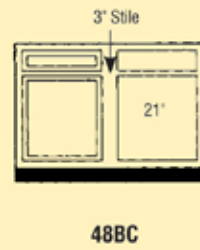
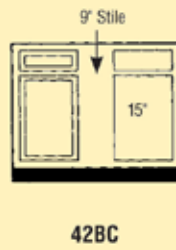
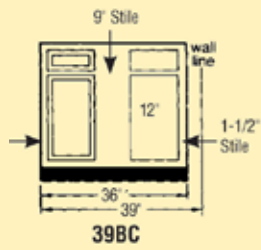


30RBS
36RBS
42RBS

BASE CORNER Cabinets

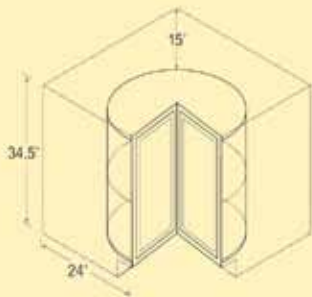


39BC 42BC 48 BC



LAZY SUSAN CORNER Cabinet

36LS



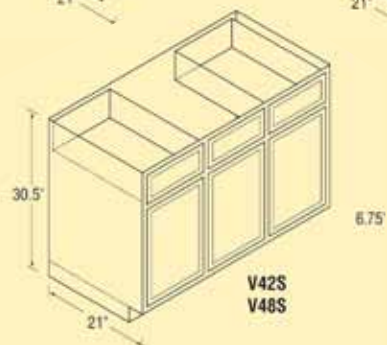
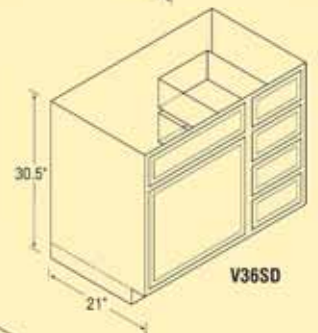
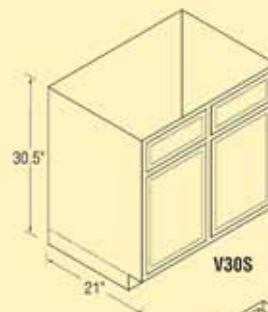
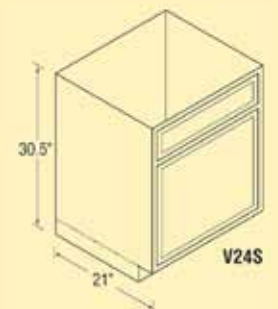
BROOM Cabinets

18BRB x 24 Deep



VANITY Cabinets

V12B
V15D
V24S
V30S
V36SD
V42S



CABINET ORDER FORM

CUSTOM RETAIL CABINETS & MILLWORK

Custom Retail Cabinets & Millwork
 9225 Slack Road
 Shreveport, LA 71106
 Phone: 318-861-0108
 Fax: 318-861-0130
 crsf@rsfixtures.com
 Attn: Tommy / Shannon

Customer _____

Address _____

City _____ State _____ Zip _____

Phone _____ Alt. Phone _____

Contact _____

P.O.# _____ Date _____

QTY	MODEL	PRICE	SUB TOTAL
WALL Cabinets 30"			
	9W	\$65	
	12W	\$73	
	15W	\$77	
	18W	\$81	
	21W	\$85	
	24W	\$91	
	27W	\$110	
	30W	\$115	
	33W	\$118	
	36W	\$128	
	42W	\$136	
	48W	\$147	

WALL Cabinets 21"			
	24R	\$81	
	30R	\$96	
	36R	\$101	
	42R	\$103	

WALL Cabinets 18"			
	24Y	\$75	
	30Y	\$90	
	36Y	\$95	

WALL Cabinets 15"			
	30X	\$79	
	33X	\$81	
	36X	\$84	
	39X	\$85	

WALL Cabinets 12"			
	30x12	\$79	
	36x12	\$84	

SUBTOTAL
\$

QTY	MODEL	PRICE	SUB TOTAL
WALL CORNER Cabinets			
	36WC	\$110	
	39WC	\$117	
	42WC	\$122	
	48WC	\$134	

ANGLE WALL Cabinet			
	24A	\$128	

FILLER STRIPS			
	3" x 36"	\$13	
	6" x 36"	\$27	

BASE Cabinets			
	12B	\$103	
	15B	\$110	
	18B	\$116	
	21B	\$121	
	24B	\$128	
	30B	\$156	
	36B	\$166	
	42B	\$181	
	48B	\$191	

SUBTOTAL
\$

QTY	MODEL	PRICE	SUB TOTAL
DRAWER Cabinets			
	15D	\$143	
	18D	\$154	
	24D	\$171	

RANGE & SINK Cabinets			
	30RBS	\$134	
	36RBS	\$142	
	42RBS	\$153	

BASE CORNER Cabinets			
	39BC	\$142	
	42BC	\$147	
	48BC	\$157	

LAZY SUSAN CORNER Cabinet			
	36LS	\$246	

VANITY			
	V12B	\$103	
	V15D	\$144	
	V24S	\$122	
	V30S	\$134	
	V36SD	\$174	
	V42S	\$181	
	V48S	\$192	

SUBTOTAL
\$

QTY	MODEL	PRICE	SUB TOTAL
BROOM Cabinets (84")			
	29BRB	\$220	
	24BRB	\$315	

BROOM CABINET SHELF KITS			
	18 BRB SHELF KIT (4 shelves w/ clips)	\$43	
	24 BRB SHELF KIT (4 shelves w/ clips)	\$53	

END PANELS			
	EP-BASE 23 1/4" x 34" x 1/2"	\$24	
	EPF (end panel finished)	\$44	

MOULDINGS			
	SCRIBE MOLDING 3/4" x 1/4" x 96"	\$9	
	SMC (Small crown moulding) 96"	\$22	
	TOE KICK 4" x 1/4" x 96"	\$18	

SUBTOTAL
\$

SUBTOTAL \$
TAX \$
TOTAL \$

MARBLESTONE™ & GRANITE

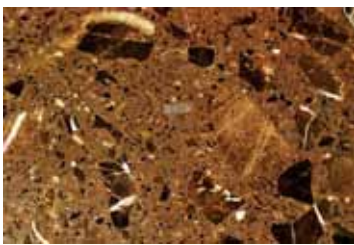


A remarkably better marble

Stylishly smooth. Elegantly contoured. Distinguished by natural irregularities. The beauty of real marble adds a level of sophistication that few other materials can match. The only trouble is, marble also poses real performance issues due to its porosity and delicate composition. But now there's something better. Remarkably better.



Marblestone™ is recycled natural marble that has been crushed, pressed, heated, and bonded with a very small amount of resin. The result is a material that retains all the beauty of marble, while offering the performance of a durable composite. Marblestone is less pervious to moisture and more resistant to scratches and stains than quarried or cultured marble. It is also a low-maintenance product that requires no special cleaning or polishing. With its superior performance, Marblestone is ideal for a wide array of applications.



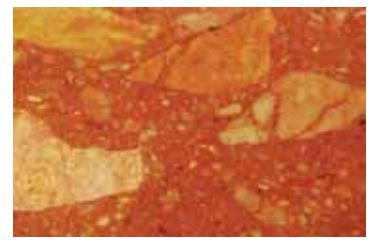
Chocolato



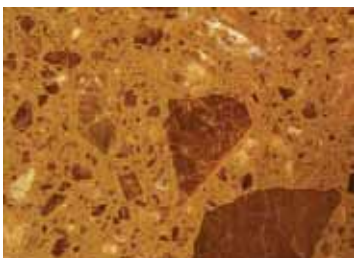
Ivory



Cafe



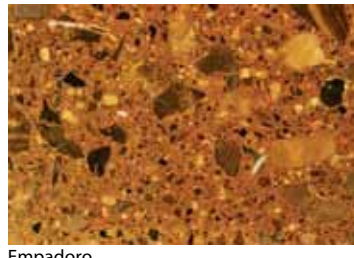
Terracotta



Terrano



Beige



Empadono

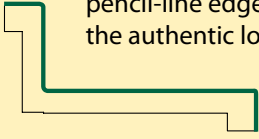


Bottachino

CALL FOR A QUOTE ON WHOLESALE MARKET PRICE ON OUR GRANITE LINE

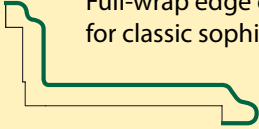
MARBELLA

The 1/8" radius creates a pencil-line edge, creating the authentic look of granite



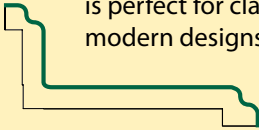
VALENCIA

Full-wrap edge design for classic sophistication



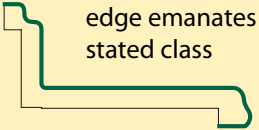
BARCELONA

Double-waterfall edge is perfect for classic and modern designs



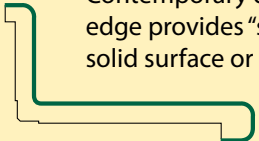
GENEVA

Subtle modern drop edge emanates understated class



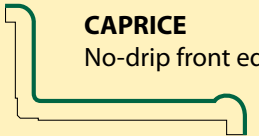
FUTURA

Contemporary double-radius edge provides "slab" effect of solid surface or stone



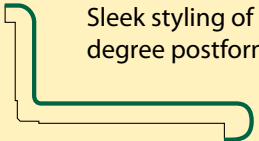
CAPRICE

No-drip front edge



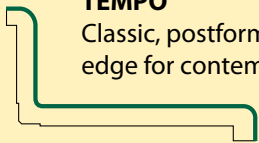
NOVA

Sleek styling of a 180° degree postformed edge



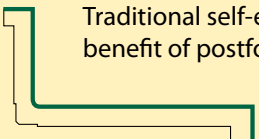
TEMPO

Classic, postformed waterfall edge for contemporary look



CLASSIC

Traditional self-edge with benefit of postformed cove



THE PROFILE OF CRAFTSMANSHIP

The continuous nose profile is perhaps one of the most distinctive features of VT post-formed laminate countertops. The lack of a front edge seam is what gives our countertops their solid surface or stone appearance, and with numerous unique edge profiles, you have your choice of how to design your project with precisely the right countertops.

VT Fine Laminate Countertops are ideal for use in projects throughout any home.

- Beautiful enough for gourmet kitchens
- Durable enough for garage work benches
- Handy workspaces for laundry rooms
- Sturdy surfaces for kids' rooms
- Useful desk space in the home office

Why VT Fine Laminate Countertops?

When you purchase VT Fine Laminate Countertops, you can be assured they're built to last. Our state-of-the-art manufacturing technology and premiere quality materials ensure that we meet—and exceed—expectations with each and every order.

- 45-lb. industrial particleboard as standard (meets all HUD and government specifications; ANSI approved)
- Plywood and MDF substrates available to meet additional specifications
- All edge profiles are available with environmentally friendly EQcountertops
- All VT Fine Laminate countertops are GREENGUARD Certified for Indoor Air Quality
- PVA glue line provides strongest possible bond between particleboard and laminate
- EQcountertops are FSC® certified

Why Postformed Laminate Countertops?

VT postformed laminate countertops are formed as a single piece with a rolled front edge and integral backsplash. So you can create personalized style at affordable prices.

- Several edge profiles and endless laminate choices
- Seamless design provides the look of granite, stone, or popular metals
- No crevices to collect dirt and grime
- No polishing or resealing needed
- Also available without backsplash and as bar tops, in a variety of standard and special sizes



LAMINATE COUNTERTOP ORDER FORM

STANDARD COUNTERTOP PRICING

FABRICATED TO YOUR MEASUREMENTS, 8-10 ft. AND 12 ft. LENGTHS

STANDARD SIZES	TEMPO TEXAS (WATERFALL)	CAPRICE (NO DRIP)	CLASSIC (DURA) SQUARE EDGE	NOVA (180° WRAP)	FUTURA (DOUBLE RADIUS)	VALENCIA / BARCELONA / GENEVA
KITCHEN & SINGLE ROLL 25"	\$12.55	\$12.55	\$13.10	\$13.00	\$13.00	\$14.65
VANITY 22"	\$12.55	\$12.55	\$13.10	\$13.00	\$13.00	\$14.65
12" & 15" BAR	\$12.55	\$12.55	\$13.10	\$13.00	\$13.00	\$14.65
18" & 27" BAR	\$12.55	\$12.55	\$13.55	\$14.90	\$14.90	\$16.55
36" BAR	\$19.25	\$19.25	\$22.10	\$22.65	\$22.65	\$24.90
42" BAR	\$20.30	\$20.30	N/A	\$24.35	\$24.35	\$27.10

CUSTOM RETAIL CABINETS & MILLWORK

9225 Slack Road
Shreveport, LA 71106
Phone: 318-861-0108
Fax: 318-861-0130
crsf@rsfixtures.com
Attn: Tommy / Shannon

HIGH DEFINITION & 180 FX COUNTERTOP PRICING

STANDARD SIZES	TEMPO TEXAS (WATERFALL)		CAPRICE (NO DRIP)		CLASSIC (DURA) SQUARE EDGE		NOVA (180° WRAP)		FUTURA (DOUBLE RADIUS)		VALENCIA / BARCELONA / GENEVA	
	HD	180FX	HD	180FX	HD	180FX	HD	180FX	HD	180FX	HD	180FX
KITCHEN & SINGLE ROLL 25"	\$17.90	\$19.65	\$17.90	\$19.65	\$18.75	\$20.60	\$18.60	\$20.40	\$18.60	\$20.40	\$21.15	\$25.00
VANITY 22"	\$17.90	\$19.65	\$17.90	\$19.65	\$18.75	\$20.60	\$18.60	\$20.40	\$18.60	\$20.40	\$21.15	\$25.00
12" & 15" BAR	\$15.50	\$17.00	\$15.50	\$17.00	\$18.75	\$20.60	\$18.60	\$20.40	\$18.60	\$20.40	\$21.15	\$25.00
18" & 27" BAR	\$17.90	\$19.65	\$17.90	\$19.65	\$19.45	\$21.35	\$21.55	\$23.61	\$21.55	\$23.61	\$24.10	\$28.33
36" BAR	\$28.20	\$30.98	\$28.20	\$30.98	\$32.75	\$35.89	\$33.55	\$36.83	\$33.55	\$36.83	\$37.00	\$43.50
42" BAR	\$30.00	\$32.87	\$30.00	\$32.87	N/A	N/A	\$36.10	\$39.67	\$36.10	\$39.67	\$40.45	\$47.57

- Above pricing includes-end caps, miter cuts with fasteners and cut to length
- 4 ft. minimum on stock colors and 8 ft. minimum on ordered tops
- Please refer to spec sheet on your selected style for exact sizes available
- For bubble wrap add \$1.00 per linear foot to above prices.
- For special depth (any size not listed) add \$50
- Prices subject to change and 50% of total price due upon conformation

UP CHARGE FOR FOLLOWING FINISHES

Wilsonart: -07	Add \$1.50 Per Ft.
Wilsonart:-52, and -90	Add \$3.00 Per Ft.
Formica: -41,-42,-46,-77 and -82	Add \$3.00 Per Ft.

ADDITIONAL CHARGES & AVAILABILITY

Radius Cuts	\$20.00 Each
Full Radius Cuts	\$30.00 Ea.
Sink Cutouts	\$25.00 Ea.
Clipped Corners	\$15.00 Ea.
Contoured Splash	\$12.00 Ea.
Square Cut End Splash	\$11.90 Ea.
Color Rite (1 oz. Tube)	\$10.50 Ea.
Plywood Tops	QUOTE
Seam Fill	\$ 9.95 Ea.

CUSTOM RETAIL IS NOT RESPONSIBLE FOR WRONG SIZES GIVEN BY THE CUSTOMER

Customer _____
 Address _____
 City _____ State _____ Zip _____
 Phone _____ Alt. Phone _____
 Contact _____
 P.O.# _____ Date _____

SUBTOTAL

\$ _____

TAX

\$ _____

TOTAL

\$ _____



CUSTOM RETAIL CABINETS & MILLWORK



9225 Slack Road
Shreveport, LA 71106
Phone: 318-861-0108
Fax: 318-861-0130
1-888-861-0108



Northwest Louisiana Home Builders Association
2038 East 70th Street, Shreveport, LA
Phone: (318) 797-8222 • Fax: (318) 798-0333
www.nwlahba.org



www.GreenCabinetSource.org
CARB 93120 Compliant Phase 1

